

December 5th, 2012

Autism

Answering the call



autism every day 7 minute version



Browse | Movies | Upload

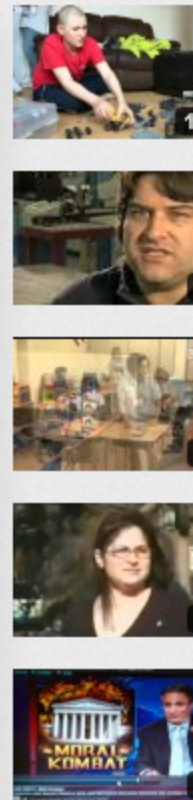
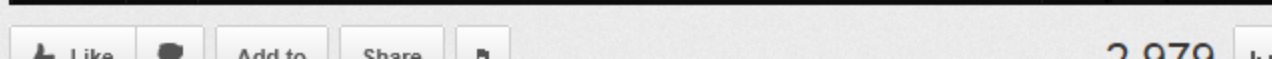
Autism Every Day - 7 minute version

jamminjoe2008



Subscribe

220 videos



Autism: Facts

- Autism now affects 1 in 88 children (1 in 54 boys)
- More children will be diagnosed with autism this year than with AIDS, diabetes & cancer combined
- Without proper diagnosis and intervention, 90% of children with autism will require government support as adults
- Autism is the fastest-growing serious developmental disability in the U.S.
- Autism costs the nation \$126 billion per year

Jamesena Ingram,
Autism Compass Consulting, LLC

Autism: In Michigan

- There are more than 15,000 children in Michigan diagnosed with autism
- Approximately 20% of these 15,000 children reside and receive special education services in Wayne County (3,009 children from zero to 26 years of age)
- More than 40% of these children reside in the tri-county area (Wayne, Oakland, Macomb)
- Less than 20% of Michigan's children with autism receive access to successful supplemental therapies and services (Dr. Catherine Lord).

Jamesena Ingram,
Autism Compass Consulting, LLC

Autism: The Problems

- Families and guardians having a difficult time navigating the “system”
- Many of the services are fragmented
- Training is needed in many areas – pediatricians, universities, educational systems, early childhood service providers
- Need for standardized protocols for screening, diagnosing, etc.

Jamesena Ingram,
Autism Compass Consulting, LLC

Autism: What we know works

- Early diagnosis and intensive early intervention has been shown to produce the best outcomes
- Children who receive intensive early intervention are 50% more likely to attend general education in their home schools by the time they start kindergarten
- With early diagnosis and intensive early intervention, the cost of lifelong care can be reduced by two-thirds.
 - The lifetime cost for a child with autism who does not receive proper treatment is \$3.7 million (Ganz, 2008).
 - For children who receive intensive early intervention it is reduced more than 80% to \$650,000, and these children make significant progress (Ganz & Boudier, 2010).

Jamesena Ingram,
Autism Compass Consulting, LLC

Autism: Services

- **ABA** - The science of behavior analysis focuses on principles about how behavior works, or how learning takes place. For example, one principle of behavior analysis is positive reinforcement. When a behavior is followed by something that is valued (a "reward"), that behavior is likely to be repeated.
- **OT** - Occupational therapy (OT) addresses a combination of cognitive, physical and motor skills. Its goals include helping a child or adult gain age-appropriate independence and participate more fully in life. For a person with autism, occupational therapy often focuses on skills for appropriate play or leisure skills, learning and self-care skills.
- **Sensory Integration** - Many children and adults with autism have challenges in processing sensory information such as movement, touch, smell, sight and sound. Sensory integration (SI) therapy identifies such disruptions and uses a variety of techniques that improve how the brain interprets and integrates this information. Occupational therapy often includes sensory integration
- **Speech** - Most autism behavioral intensive therapy programs include speech-language therapy. With a variety of techniques, speech-language therapy addresses a range of challenges often faced by persons with autism. For instance, some individuals on the autism spectrum do not speak, while others love to talk but have difficulty using conversational speech and/or understanding the nuances of language and nonverbal cues when talking with others.
- **PT** - Physical therapy focuses on problems with movement that cause real-life limitations. In particular, physical therapy can improve poor muscle tone, balance and coordination. Many children and adults with autism have challenges with motor skills such as sitting, walking, running and jumping.
- **Social Skills** - Social skills groups offer an opportunity for individuals with autism to practice their social skills with each other and/or typical peers on a regular basis.

Jamesena Ingram,
Autism Compass Consulting, LLC

Autism: Improving the System

- Training and standardized screening practices
- Training and standardization of diagnosis tools
- Centralization of access and services; both are incredibly fragmented
- Improve awareness
- Legislation

Jamesena Ingram,
Autism Compass Consulting, LLC

Autism: Wayne County's Efforts

- Formed an Autism Task Force
- Developed Inventory of Services
- Created Autism Road Map for Wayne County Residents
- Supported Legislation
- Increased Awareness
- Implemented Project Search

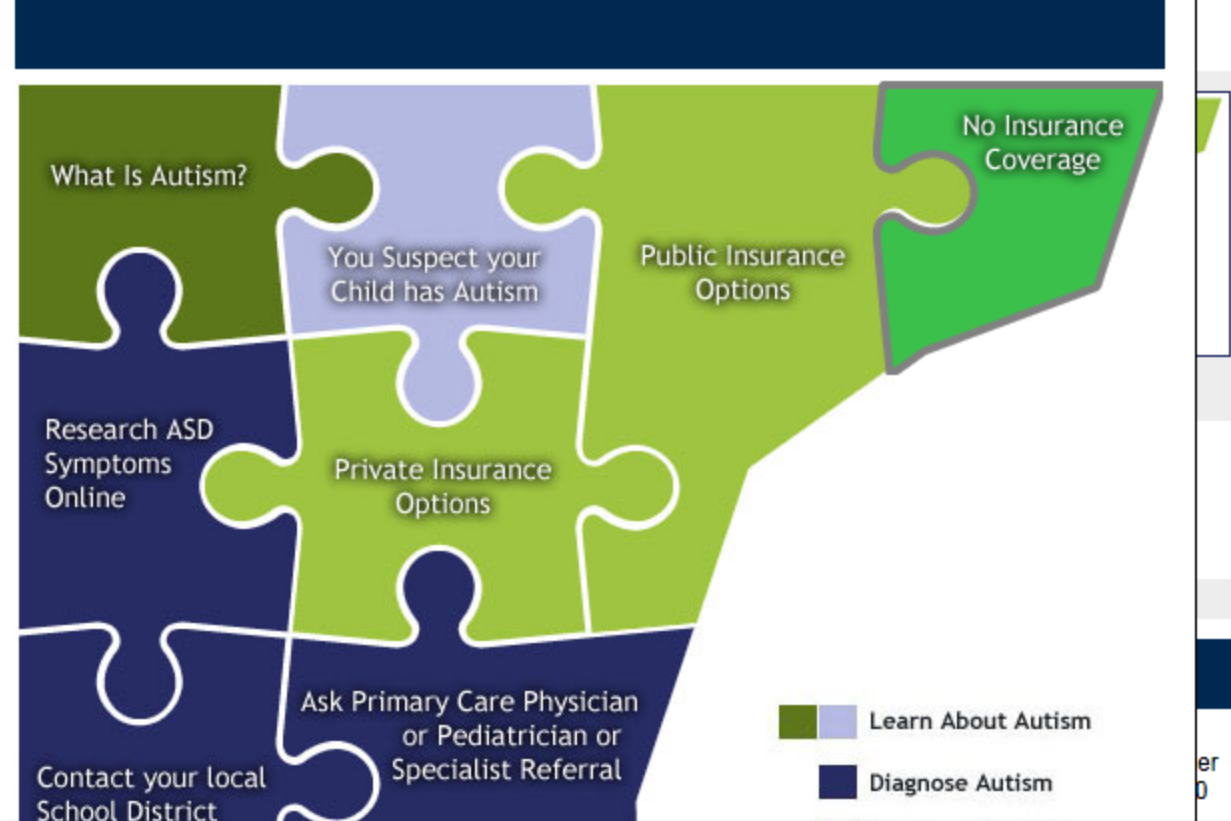
Jamesena Ingram,
Autism Compass Consulting, LLC

Wayne County Autism Care Roadmap

Wayne
: Elected C

WAY

AUTISM CARE ROADMAP



Autism and AID minutes

Robe
Wayne
Executi
EXECU



Get A
Expur
Apply
Get D